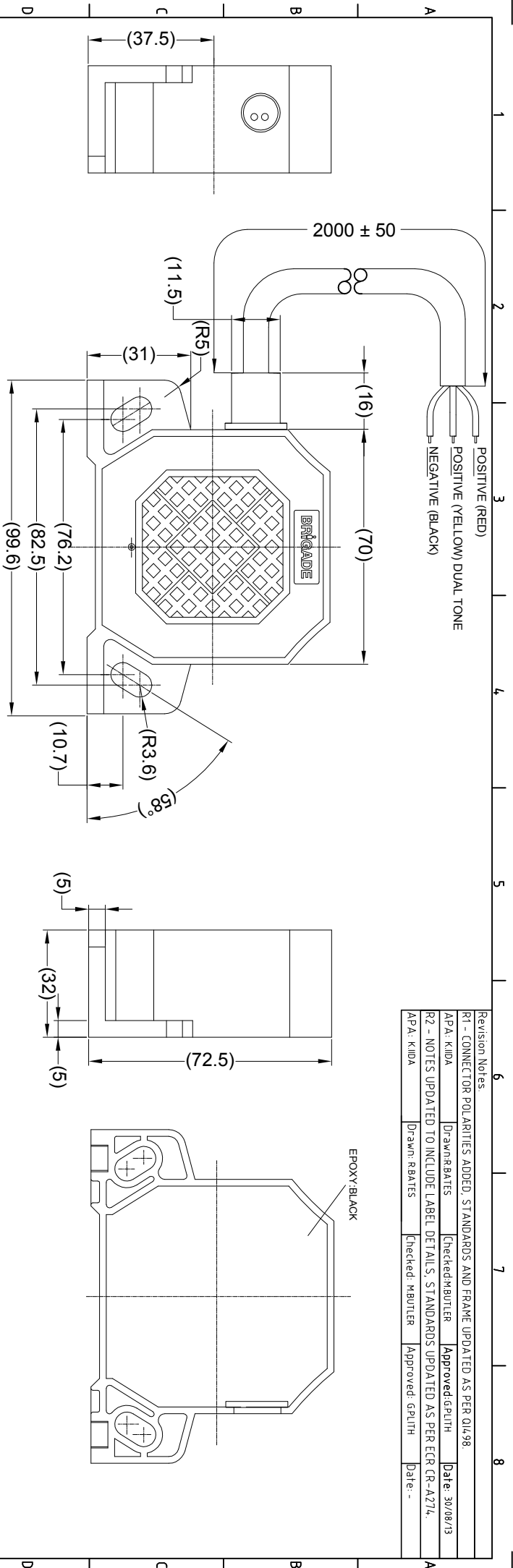


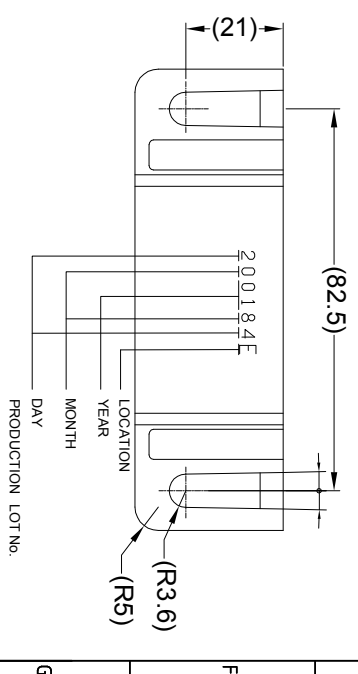
Revision Notes			
R1 - CONNECTOR POLARITIES ADDED. STANDARDS AND FRAME UPDATED AS PER Q14/98			
APPA: KILDA	Drawn/RBATES	Checked/MBUTLER	Approved/GRUTH Date: 30/08/13
R2 - NOTES UPDATED TO INCLUDE LABEL DETAILS. STANDARDS UPDATED AS PER ECR CR-A274.			
APPA: KILDA	Drawn: RBATES	Checked: MBUTLER	Approved: GRUTH Date: -



SPECIFICATION:

1. RATED VOLTAGE: 1224 VOLTS DIRECT CURRENT (WORKING VOLTAGE RANGE 9 - 32 VOLTS)
2. RATED CURRENT: 0.2 AMPERES OR LESS.
3. SOUND PRESSURE: 97±4 DECIBELS AT TEST VOLTAGES OF 14/28 VOLTS. (AS MEASURED AT A DISTANCE OF 1.2 METERS AND AT A HEIGHT OF 1.2 METERS ABOVE THE GROUND)
4. FREQUENCY: 1400±200Hz AT TEST VOLTAGES OF 14/28 VOLTS BACKUP SOUND. DUAL TONE 1400/1550 ±200Hz.
5. INTERMITTENCE: 80±10 CYCLES PER MINUTE AT TEST VOLTAGES OF 14/28 VOLTS.
6. DURABILITY: TO BE ABNORMALITY-FREE AFTER SUBJECT TO ITEM SAEJ1994.
7. SURGE VOLTAGE TEST: TO BE ABNORMALITY-FREE AS TESTED SUBJECT TO ISO7637 ITEM 3a, 3b, 5.
8. RANGE OF OPERATING TEMP. GUARANTEED: -40°C ~ 85°C.
9. ENVIRONMENTAL TESTS PER SAEJ1994.

- NOTES:**
1. FINISH: BLACK
 2. FOR PRODUCT LABEL REFER TO LATEST REVISION OF DRAWING: BE-002833-XX-14.
 3. FOR GIFTBOX LABEL REFER TO LATEST REVISION OF DRAWING BE-002834-XX-14.
 4. "R TRIANGLE" INDICATES CHANGES MADE TO REVISION OF DRAWING AS IDENTIFIED IN REVISION NOTES.



PROPRIETARY NOTICE
 THIS DESIGN AND TECHNICAL INFORMATION APPEARING ON THIS DRAWING IS THE PROPERTY OF BRIGADE ELECTRONICS, AND IS DISCLOSED IN CONFIDENCE. IT IS NOT TO BE COPIED, REPRODUCED, REVEALED TO OR EXPLOITED BY OTHERS, EITHER IN WHOLE OR IN PART WITHOUT THE EXPRESS WRITTEN CONSENT OF BRIGADE ELECTRONICS.



<p>Angle of Projection</p> <p>Third Angle</p>	Assembly Pl Approval	Approved by	Checked by	Drawn by
	-	DKERAL	DKERAL	DKERAL
	Units	Scale	Released	Assembly Ref
	mm	N/A	21/04/01	-
	Status	DF-460TCA-2		
	RELEASED			
	Part No	BE-000381-02-06		
	#1404			